

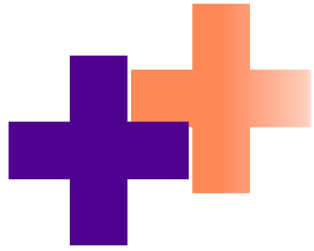
Accelerating Health innovation



SAHLGRENSKA SCIENCE PARK

Annica Grimberg Lignell

Jessica Planefeldt



CROSS-SECTOR & CROSS-FUNCTIONAL INNOVATION AND COLLABORATION

- Innovation programmes & knowledge transfer
- Cluster collaboration
- Trendspotting
- Policy shaping



TAILORED BUSINESS ADVICE & SUPPORT

- Product, Business, Scale, Capital
- Startup & Scale Up programmes
- Match making
- Access to healthcare verification and procurement



COMMUNITY BUILDING, NETWORKING AND CO-LOCATION

- Offices & Labs
- Events & seminars
- Blogs, editorials and podcasts
- Collaboration with hubs, parks and organisations



A vibrant Park Community

- Meeting facilities
- Networking events
- The Studio@SSP
- Startup Co-working Zone
- Common areas for *fika*, lunch and networking
- CEO Network
- Community breakfasts
- Neighbours' lunch seminars
- Educational seminars
- Gym & Sauna Clubs & networks
- Recruitment platform - Jobylon
- >90 companies > 1600 employees



Life science @ Medicinareberget

The power of collaboration

Region
Halland

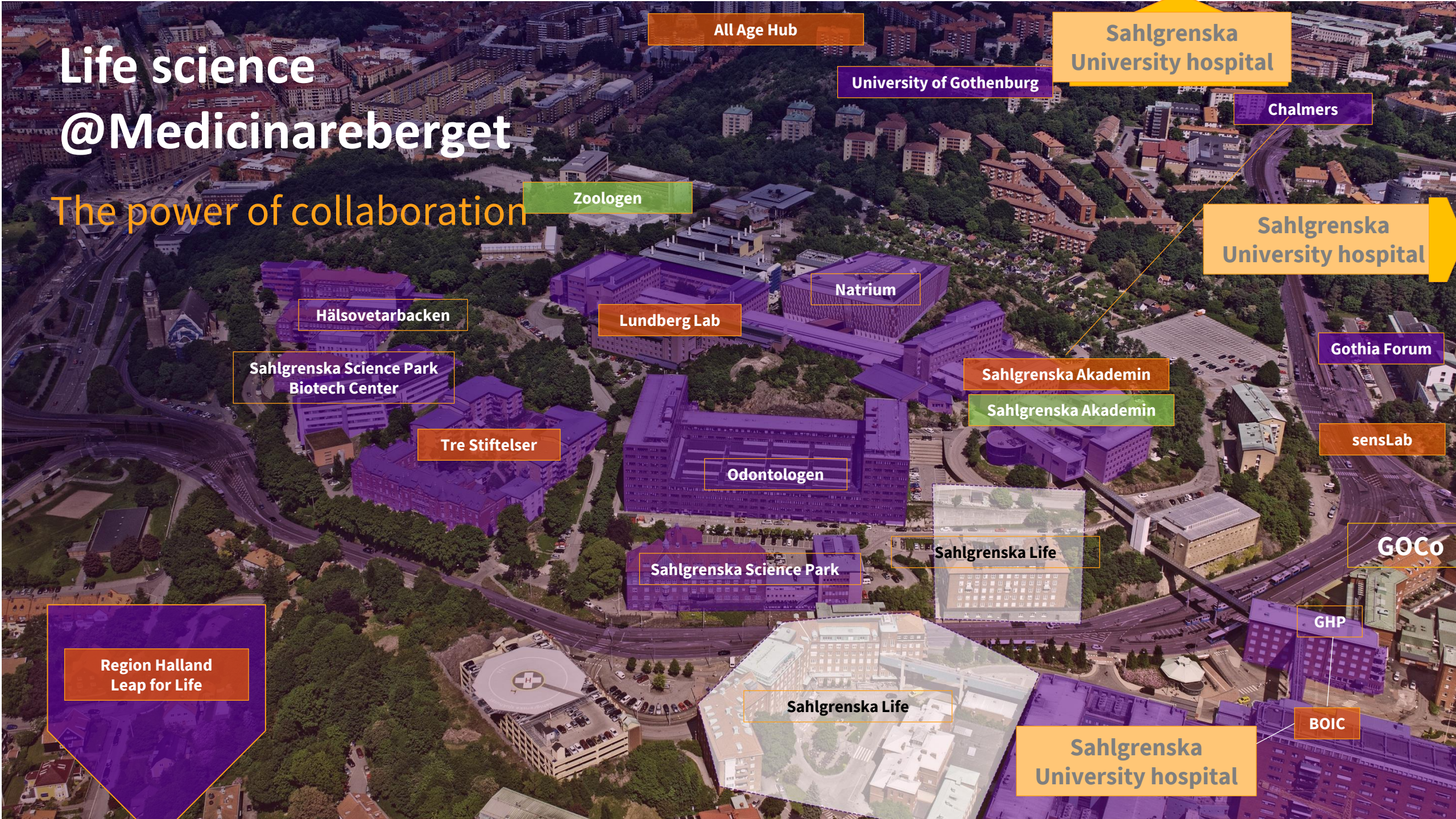
Sahlgrenska Life

Sahlgrenska
University hospital



Life science @Medicinareberget

The power of collaboration



All Age Hub

Sahlgrenska University hospital

University of Gothenburg

Chalmers

Zoologen

Sahlgrenska University hospital

Hälsovetarbacken

Natrium

Lundberg Lab

Gothia Forum

Sahlgrenska Science Park Biotech Center

Sahlgrenska Akademin

Sahlgrenska Akademin

sensLab

Tre Stiftelser

Odontologen

Sahlgrenska Life

GOCO

Sahlgrenska Science Park

Region Halland
Leap for Life

GHP

Sahlgrenska Life

BOIC

Sahlgrenska University hospital

Contact-free detection and quantification

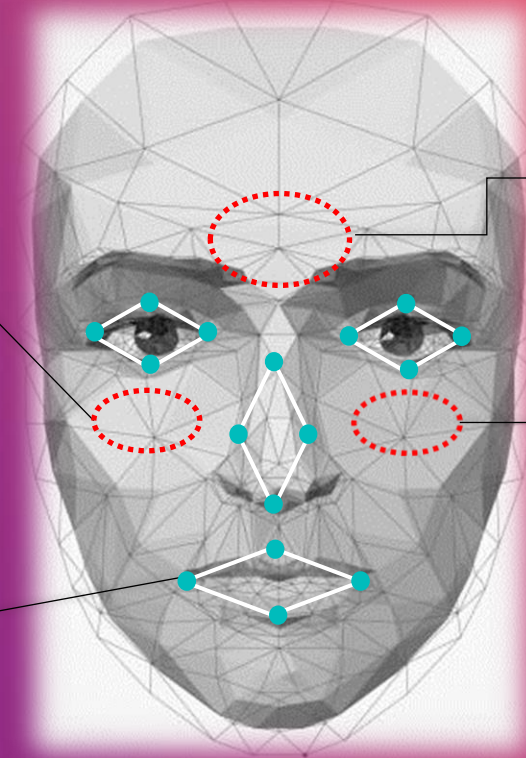
of vital signs by scanning the face from a one-meter distance (four feet). The technology's unique potential comes from implementing and adding automatic contactless measurements in situations where it was previously impossible.

Health care

Emergency triage
Home care
Nursing homes
Primary care
Telemedicine

Cross industry

Automotive
Aviation
Shipping
Sport races
Travel
Work offices



Measuring points

Identification points

- Blood pressure
- Oxygen saturation
- Heart rate
- Body temperature
- Respiratory rate



120/75
mmHg



99
SpO2%



20
RPM



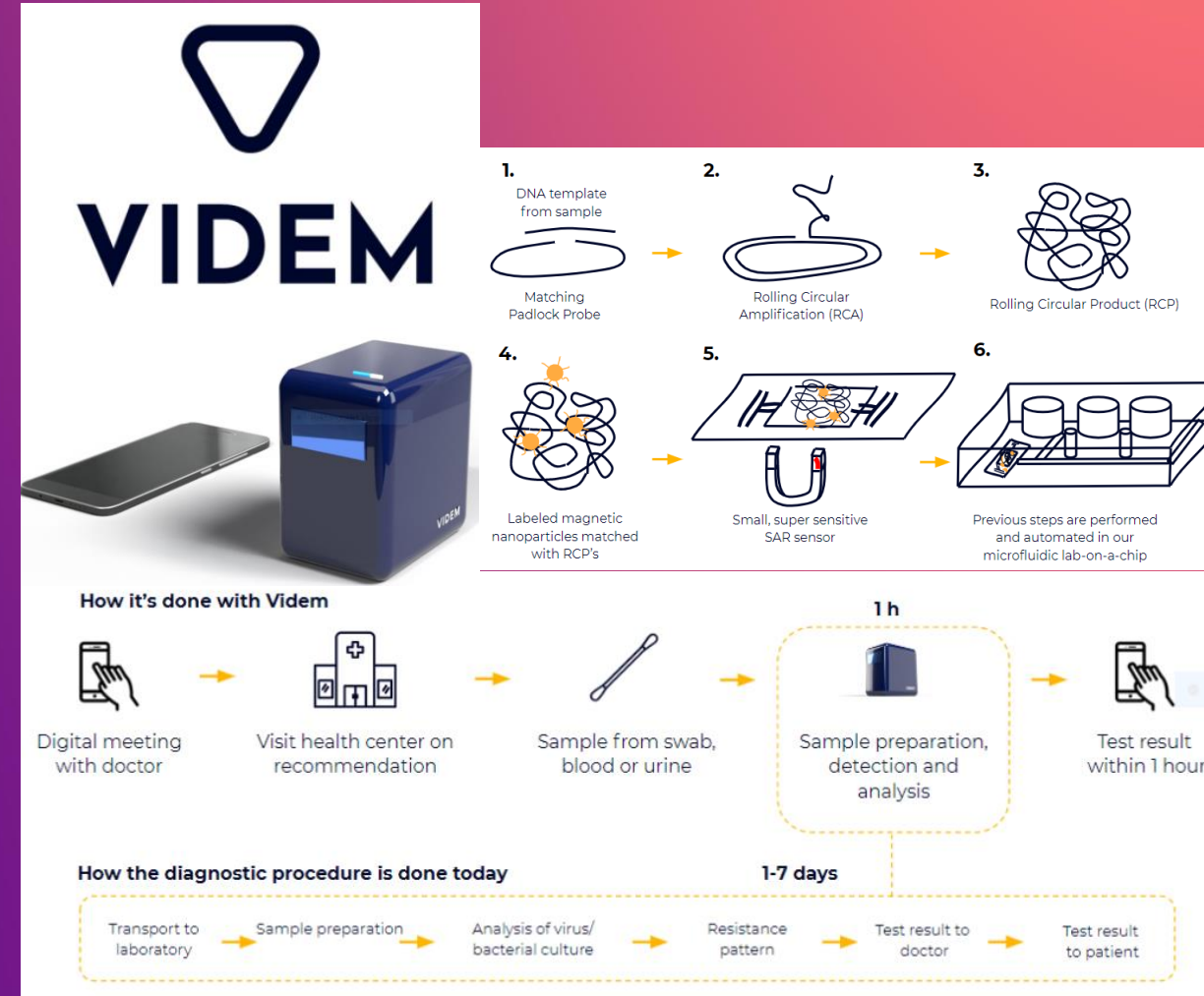
37
C°



65
BPM

Accelerating diagnostic

Providing quick and accurate diagnostics for detection of infectious diseases directly at the point of care. The technology is universally applicable for all pathogens, enables multiplex testing and is developed through state of the art bio and nanotechnology.



Health care

Primary Care

Secondary Care

Field Care

Laboratory & R&D

Cross industry

Agriculture

Water Analysis

Veterinary Medicine



Sahlgrenska Academy



Understand how the body works, prevent illness and develop treatments.

Research ranges from basic experimental research on the structure of molecules and the function of cells to studies at the population level.

Strategic Research Areas :

In the research forefront Internationally

- Dentistry
- Neuropsychiatry
- Cardiovascular disease
- Metabolism
- Gastrointestinal
- Person-centred care

National Research Centers:



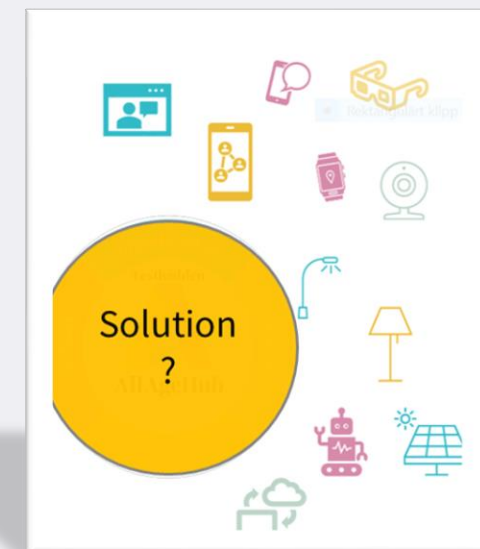
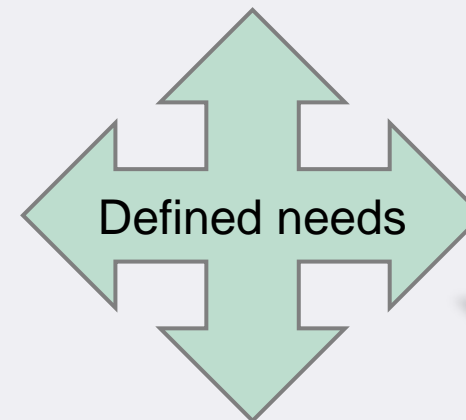


Initiative between the 13 municipalities in Region Göteborg

- Drive the use of welfare technology
- User driven ; care givers, users and relatives
- Need based testing
- Test In real life setting : at home, in care centers, outdoors



**Process
driven**



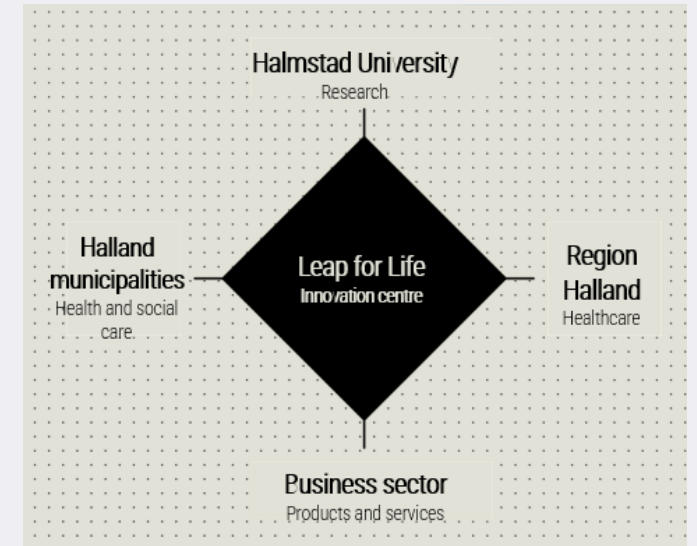


Leap for Life

Test environment Region Halland

Drive collaboration with care givers, companies and researchers

- Springboards
- Test projects
- Expert Evaluation
- Design Sprint
- Presentation day
- Research collaboration



Looking for pioneers

sensLab @ Salhgrenska University Hospital

Drive digital innovation based on the needs of employees and patients

New arena starting in 2022

- Drive digital improvements today
- Explore digital innovation that may define the healthcare of the future.
- sensLab offer opportunities for testing concept ideas and solutions in the technology areas of connected/digital health and visualization, which include sensor technology, IoT, UX, VR and AR.

Tre Stiftelser – Elderly Care homes

E

Digital technology and digital tools and support

- **Music Doll** - a doll with music
- **Tovertafel** – Activate people with special care needs light projections on the table
- **Musikvagga** – ErgoNova Rocking chair with two built in loud speakers in the back support and a bass vibrator that produces tactile stimuli for well being
- **Eat robot** – Bestic, enables functional disabled to manage eating on their own
- **Beamer** – to show film on large screen - for socializing
- **Robotkatt and Nintendo Wii**



- Digital medicine routines
- App based work schedules
- Vacuum Cleaning robots
- Ipads and phones
- Fall prevention testing
- Toilet seats for easy access