



# INNOVATION SKÅNE

- access to testing opportunities in the Skåne region for exciting new concepts and products

FRED KJELLSON  
MAGNUS WALLENGREN  
ERIK STENBERG

NORDIC PROOF MEETING SEPTEMBER-22

**Innovation Skåne is an innovation company owned by Region Skåne.**

**We contribute to the growth and public service development of the Region, through innovation.**

# A DUAL OFFERING

FOR STARTUPS AND BUSINESS

FOR THE PUBLIC SECTOR IN SKÅNE

- COMMUNITY
- TESTBEDS
- SYSTEM KNOWLEDGE
- MARKET & BUSINESS EXPANSION

- INNOVATION SUPPORT
- DEVELOPMENT OF IDEAS CREATED IN REGION SKÅNE
- LICENSING TO INDUSTRY
- TECHNOLOGY AND BUSINESS TRENDS

GROWTH

FUTURE  
WELFARE  
SERVICES

INDUSTRY



REGION SKÅNE

# INNOVATION AREAS



## HEALTH

Better health for all.



## MOBILITY

Climate challenges drive innovation and collaboration.

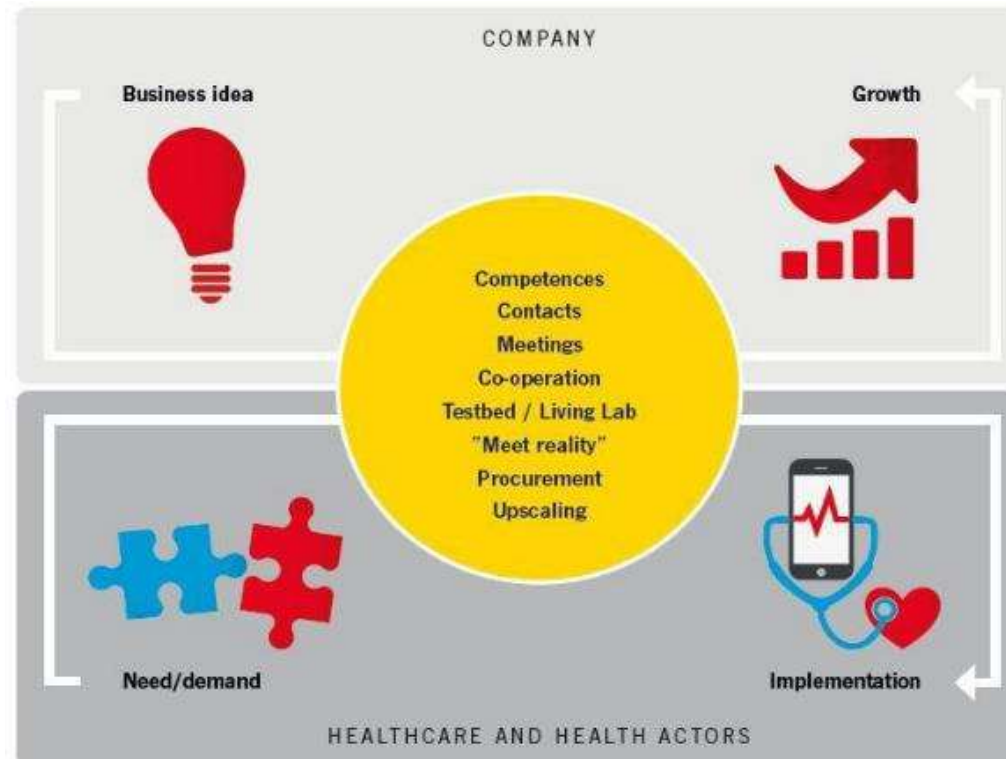


## FOODTECH

Together we create the food system of the future.

# Testbed set-up

# Testbed sweet spot



# Testbed – Innovation broker

## How



Testbed – Test & evaluation support



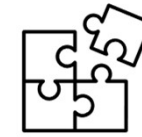
Support with Regulatory navigation



Scouting of unmet needs



Scaling and growth



Connect SMEs, large companies, academia and public

## What



A more interlinking innovation ecosystem, joining unmet needs with demonstration opportunities (for public and private)

## Why



Sustainable growth and innovation in public services, with testbeds and challenge-driven innovation

## Who



Focus on public unmet needs in collaboration with solution owners. Extended impacts with multi-helix involvement

# Testbed - Value proposition

- Background:
  - A way to support innovation, growth and development of healthcare.
  - Continuous improvement of processes and activities.
- Decision support based on:
  - System, demand knowledge and advice.
  - Access to customer and staff (healthcare professionals)
  - User and customer feedback.
  - Usability
  - Refinement in various product dev phases.
- In order to obtain a better product market fit



# Quick facts

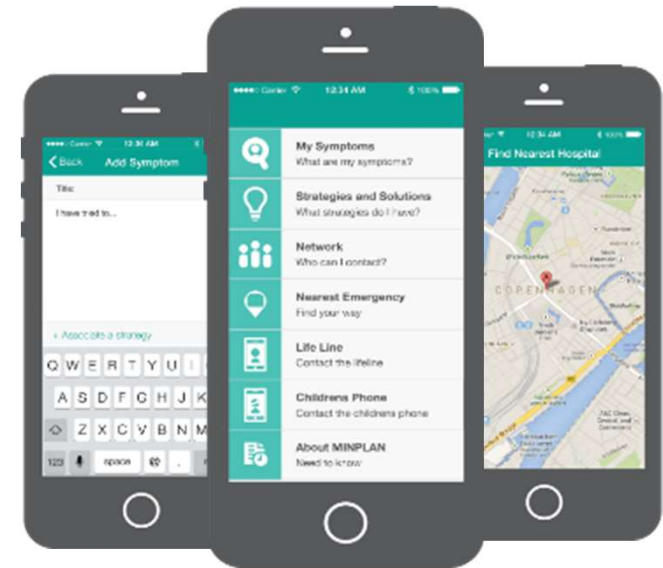
<b>Testbed</b>	Innovation Skåne
<b>Contact person and email</b>	Magnus Wallengren, Fred Kjellson, Erik Stenberg testbed@innovationskane.com
<b>Country</b>	Sweden
<b>Stakeholders</b>	Owned by Region Skåne <ul style="list-style-type: none"><li>• Healthcare provider: University hospital, hospitals (specialty care), primary care</li><li>• + public transportation, regional growth, tourism, culture</li></ul>
<b>Services provided</b>	<ul style="list-style-type: none"><li>• Need insights of (public) healthcare</li><li>• Innovation and evaluation support during product development process (e.g. usability testing)</li><li>• Business support (market insights, procurement matters, regulatory ..)</li></ul>
<b>Track record</b>	<ul style="list-style-type: none"><li>- Supported startup in understanding end-user need, clinical aspects of content -&gt; market released app for promoting physical activity for children with obesity</li><li>- Contributing to collaborative project developing a solution supporting improved self-care for people with chronic kidney disease</li><li>- Usability testing in municipal care, of patient support solutions, for large medtech company</li></ul>

Testbed case study:

**MINPLAN IN SKÅNE'S HEALTH CARE  
SYSTEM:  
A STUDY OF THE SKÅNE AND  
NATIONAL WORK FOR SUICIDE  
PREVENTION AND A USABILITY AND  
NEEDS STUDY OF MINPLAN**

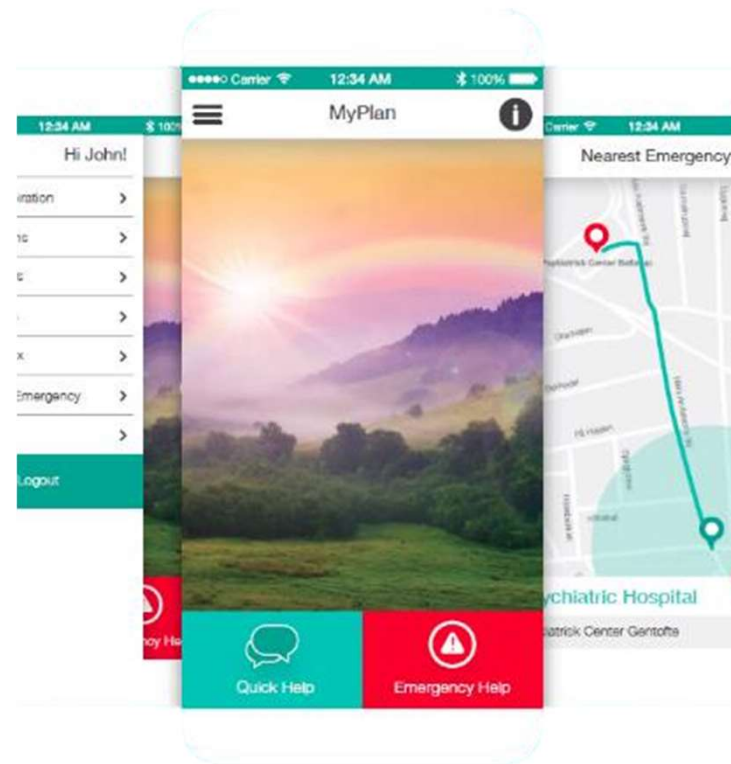
# The solution: MinPlan

- The Minplan app is a self-help coping support tool.
- It has been developed in close collaboration between scientists, clinical professionals and various people with suicidal behavior and self-harm.
- Minplan intends to enhance feelings of being safe both for the user as well as their family and friends.
- In addition, the app is designed to increase awareness of crisis symptoms by improving recognition of these and establishing the user's own experience with self-help skills.

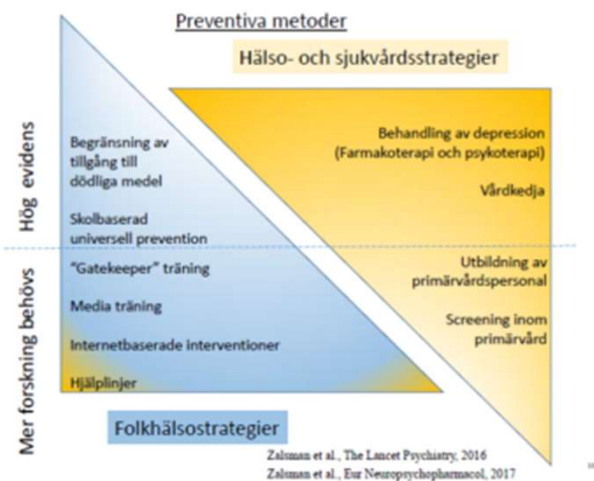


# The testing framework

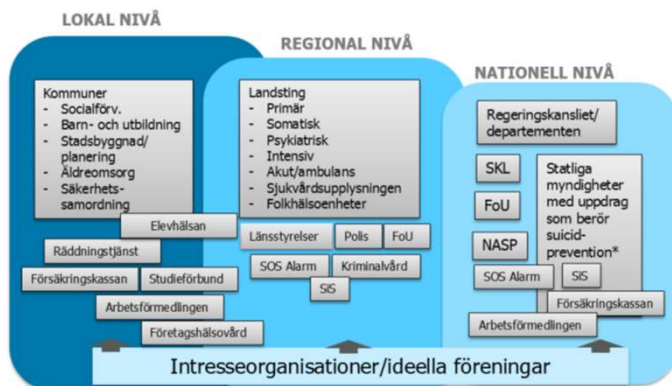
- **Mission: The assignment was twofold and focused on:**
  - Strategic suicide prevention work in Skåne,
  - Usability of the product in a Swedish context



# Strategic suicide prevention work in Skåne



- Interview with Region Skåne's suicide prevention coordinator.
- During the interview, the role and responsibilities of the coordinator within Region Skåne were discussed.
- Furthermore, national and regional action plans for the coming years were discussed and documented.



# Usability testing

Usability testing MinPlan for better understanding of Swedish views and requirements on the product.

Together with researchers and health care professionals from primary care and specialist care, their views on MinPlan as a possible solution in regional practice were explored, where the English version was evaluated in terms of; strengths, weaknesses, opportunities and threat perspectives in a regional health care context.



**THANKS!**