



# The Intervention Centre - Clinical Test Facility at Oslo University Hospital

Karl Øyri, PhD  
Section Manager

Section for Method Development and Industry Collaboration

# The Intervention Center



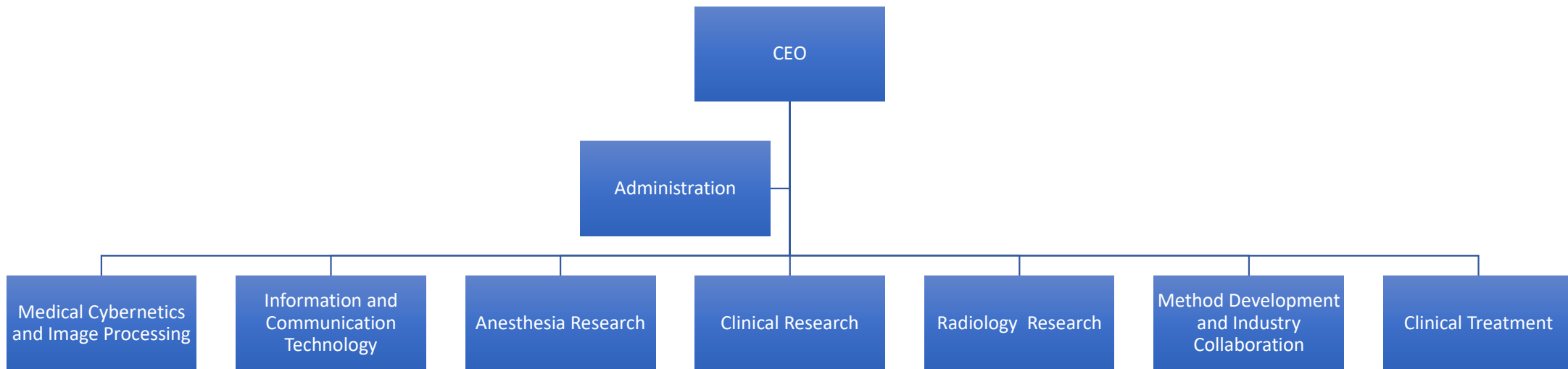
## Mandate:

- Established in 1996 to introduce advanced technologies in medicine
  - Safe introduction of new technologies for the benefit of patients
- Department for Clinical Research and Development
- Image guided and minimally invasive therapies
- Support industry Collaboration:
- Non-production based funding

1. Cross Disciplinary Staff
2. Hybrid/ Multi Modal OR's
3. Backup to Gold Standard



# Organization





# Separation of R&D and production





# Research Groups

1. Medical Robotics, visualization and navigation
2. Research Group for Industry Sponsored Studies
3. BigMed
4. Wireless Biomedical Sensor Network Research Group
5. Value-based and International Health Care Research
6. Clinical and experimental cardiovascular monitoring
7. MR guided High Intensity Focused Ultrasound treatment
8. Image guided general surgery and intervention



# Infrastructure assets



Multi modal OR's.

-2 Hybrid Angio OR's

-1 CT on rails

- 2 OR's +

Intraoperative CT

-Hybrid Videoscopic OR

-MRI Adjacent OR

-2 MRI's

-Preclinical OR



# Formal Requirements



## About Applying To REC

REC shall provide advance approval for:

- Medical and health research projects
- General and thematic research biobanks
- Dispensation from professional secrecy requirements for other types of research

More information about applying to REC can be found under the specific menu option - see in particular **Rules and Procedures** and **Deadlines and Forms**.

Applications must be sent to REC in electronic format. You have to log in to get access to the forms.

## Latest messages

### Change in publication of final reports from 12.4.2013

The submitted form for the final report to REC (Sluttmelding) is from 12.4.2013 onwards, made publicly available in its full text in the REC Public Records - Application Database. For final reports submitted before this date, the publication attached to the form is publicly available.

### If you have not logged on to the portal since January 5th, you have to order a new password

Updating of the REC case portal January 6th, requires every user to order a new password. Before logging in, you must clear your browser cache and delete cookies. Please remember to edit your user profile in order to access your forms and applications. We apologize for any inconvenience. If you have problems logging in, please contact your local REC, or send an email to [post@helseforskning.etikkom.no](mailto:post@helseforskning.etikkom.no)

Change password

Create new user  
Forgotten/new password



# Partners



**NordicProof**

Testing solutions for  
world class healthcare



inven2



# Competitive strenghts

- Preclinical Tials
- Human Trials
- Technology Trials

## QoS

- Formalized collaboration with OUS
  - Nordic Proof
- High quality digital documentation
- Transparent public health system
  - Longitudinal patient follow up
- TestBed
  - Dedicated Infrastructure
    - Expertize: Clinical, Imaging, Technology, IT
  - “First in Man”/Early Phase Studies

