

Nordic Proof webinar 14.9.2021

CO-DEVELOPING DIGITAL AND DATA DRIVEN SOLUTIONS WITH HELSINKI UNIVERSITY HOSPITAL

Pekka Kahri, Technology Officer

Katariina Rouvinen, Project Manager

HUS – Helsinki University Hospital

ACADEMIC MEDICAL CENTER HELSINKI CAMPUS



TERKKO
HEALTH
HUB

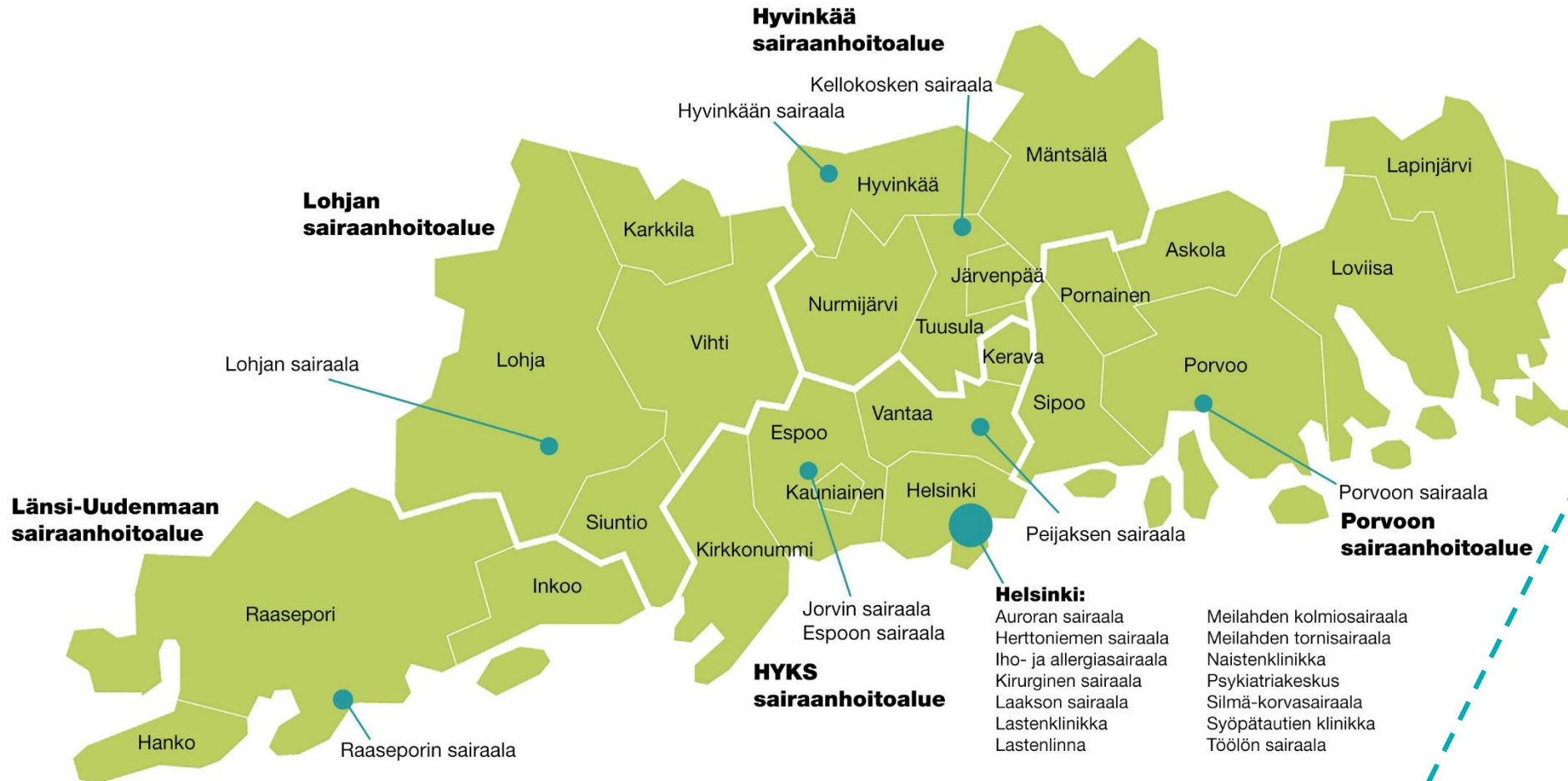


HEALTH
CAPITAL
HELSINKI

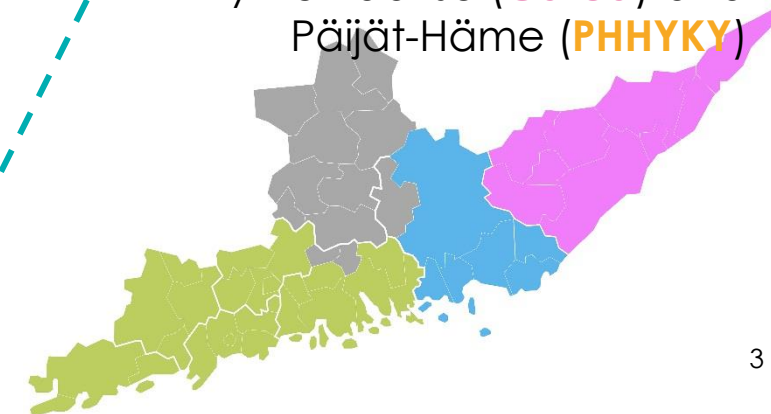
FORUM
VIRIUM
HELSINKI

HEALTHVILLAGE.FI

HUS OPERATES IN 23 HOSPITALS



Southern Finland special catchment area for tertiary care together with districts of Southern-Karelia (**Eksote**), Kymenlaakso (**Carea**) and Päijät-Häme (**PHHYKY**)



HUS is active in research, development and deployment of digital solutions

HUS*



THE BIGGEST HEALTH DATA REPOSITORY IN EUROPE

CE-certified (class 1)

Services for researchers: data availability, research permits



ACADEMIC MEDICAL CENTRE

Research based – clinically validated – high quality data
3000 Scientific publications annually



INDUSTRY COLLABORATION

Clever Health Network

- 15* ecosystem partners
- 5* ongoing joint projects

Public procurement, market dialogue, innovative procurement practices (DPS)



DEVELOPING AI-BASED SOLUTIONS

2018 capability for CE-marking
2020 first machine learning based implementation



ROBOTIC PROCESS AUTOMATION

40* Distinct automated tasks
60* FTE saved since Oct/2018

* situation 12/2020

ENGAGING IN CO-DEVELOPMENT OF DIGITAL SOLUTIONS WITH HUS

- Initial contact (Nordic Proof or directly)
- Assessment and dialogue with HUS coordinators
- Interacting with HUS clinicians and Cleverhealth Network partners (www.cleverhealth.fi/en)
- Project preparation and planning
- Contracts & Execution

HUS⁺



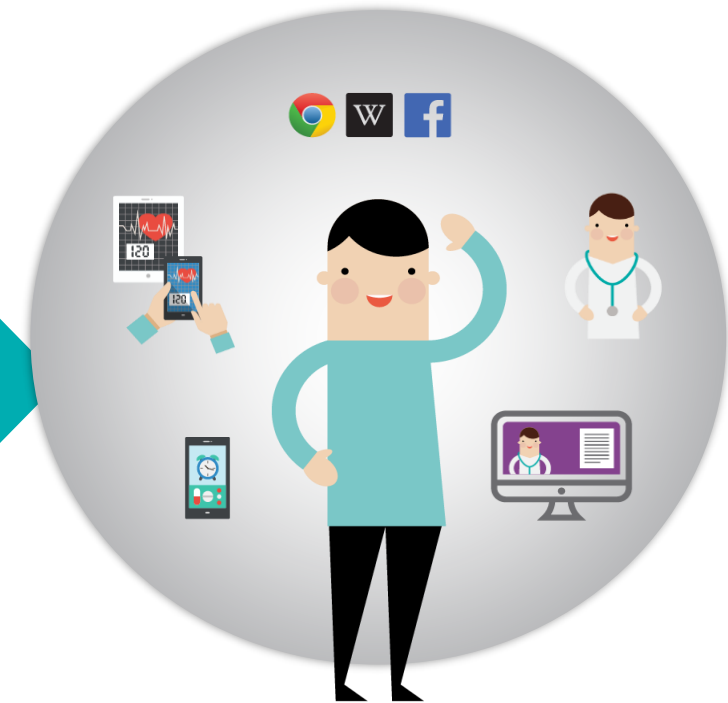
INTEGRATION TO OPERATIVE SYSTEMS



The image shows a composite of the APOTTI (EPIC) EMR system interface and the Maisa patient portal. The APOTTI interface is a colorful grid of modules including Inpatient, Ambulatory, Pop Health, Analytics, Rev Cycle & Access, Health Plans, Specialties, Education, and Research. A central circular logo reads "One Unified Platform" with "AMBULATORY", "INPATIENT", "SOCIAL CARE", and "HEALTH PLAN" stacked inside, and "PATIENT EXPERIENCE" and "EPIC SOFTWARE" below. The Maisa patient portal is a mobile app interface with a top bar showing "9.28" and "Puputilulla". Below the header is a "TOIMINNOT" section with icons for "Viestit" (23), "Ajanvaraukset", "Tehtävät", "Seurannat", "Tulokset", "Lääkkeet", "Terveystiedot", "Kirjeet", "Kyselyt", and "Oirekysely".



FHIR R4 Support	
Patient	Observation
Practitioner	Condition
Encounter	Medications
Location	Diagnostic Report
Value Set	Care Plan
Immunization	Related Person
Allergies	Procedure
Goal	Organization
Device	Care Team
Research Study	Clinical Notes
Adverse Event	Explanation of Benefit
Coverage	Consent
Service Request	



Apotti (EPIC) EMR system & Maisa patient portal

Digital Health Village