

Project Ipsilon B.V.

We strive for cognitive wellness one musical note at a time

Yayoi Sakaki, CEO

Covid-19 requires new solutions in healthcare

Webinar by Nordic Proof

May 26th at 9:00 CET



Music → Brain → Cognition & Data



Activates various brain parts
Reinforces connectivity



Improves
cognitive functions



Generates data
ideal for AI analysis

Our product – Ipsilon test (IPS-001)



App

Gamified
Music-based
Tele-medical

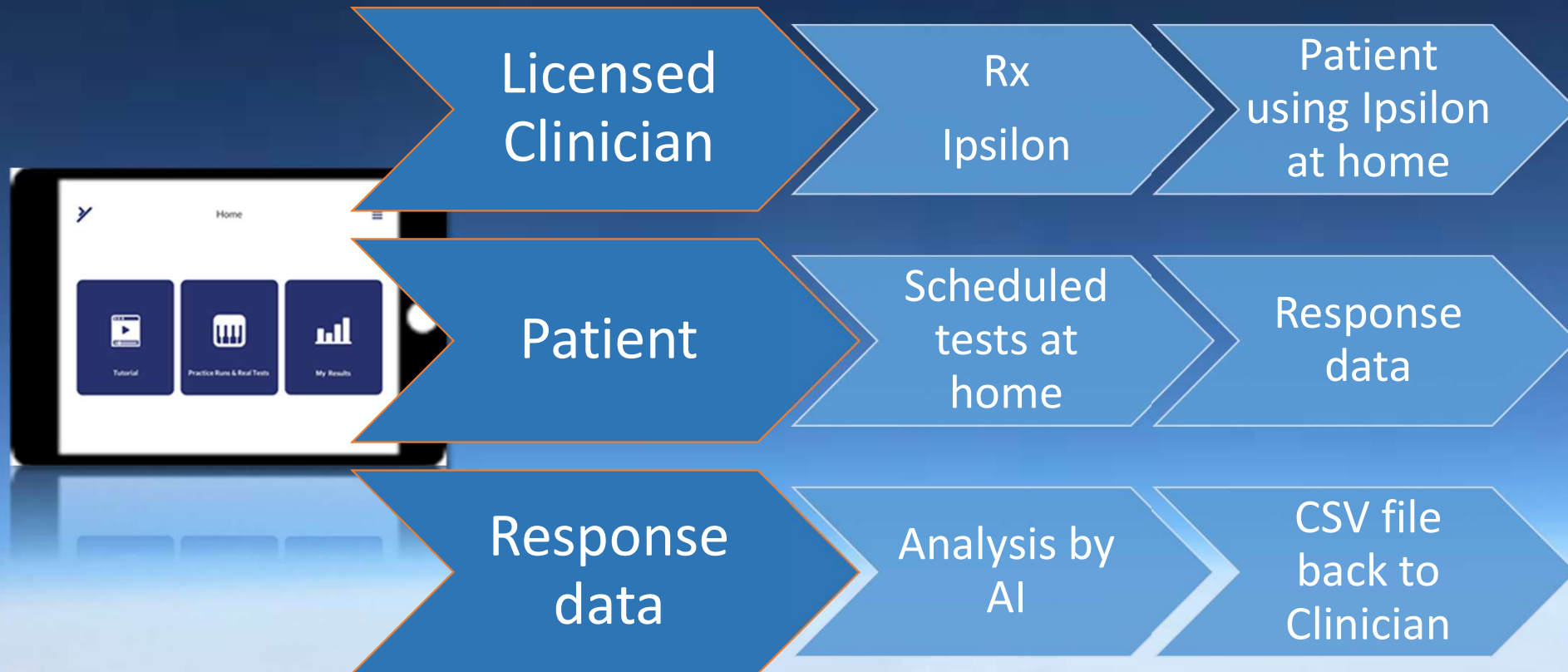
Test

Memory
Attention
Executive Functions
Spatial-motor skills

Value

Response-time-
based cognitive test
Rehabilitative tool
Fast 5 min-test

How it works



Why Ipsilon Test?

Telehealth

IMPACTS



Quality of Life

Patients
'connected'

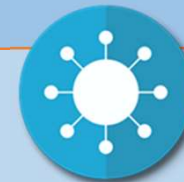
Remote self-care

monitoring
Assessment
Training (rehab)

Specialist video call

Appointments
Critical mental care

Covid-19



Neuro symptoms

Over half of patients at ICU
33% when discharged from hospital

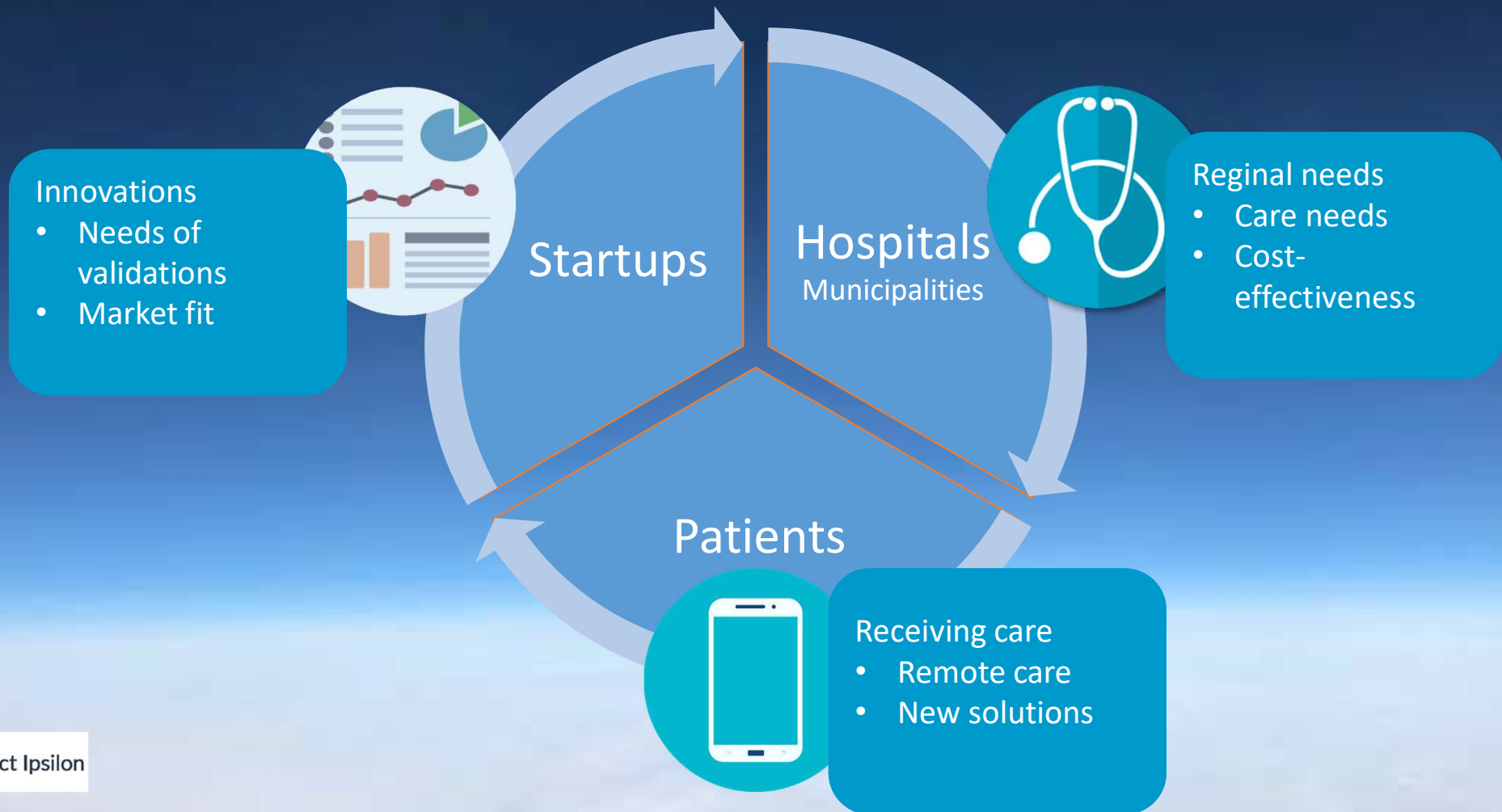
Risk mitigation

Vulnerable patient groups
Home cognitive & mental care

At home follow-up, rehab tool

Post-hospital discharge

Importance of network and collaboration



Our Nordic Proof journey thus far

- Startup
Telehealth
Remote self-care

Project
Ipsilon



- Matchmaking
Regional interests
Clinical institutions

Nordic Proof



- Pilots
Hospitals
Municipalities

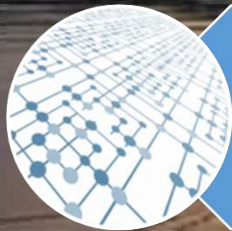
Regional
supports



Advantages of Nordic market



Support for telehealth



Strong regional networks



Excellent clinical facilities

Thank you 

Yayoi Sakaki, CEO

sakakiyayoi@projectipsilon.com

+1 (212) 920-1360

+31 (6) 2276-8839



Office: Marconistraat 16, 11e verdieping, 3029 AK Rotterdam, The Netherlands