



# The Intervention Centre - Clinical Test Facility at Oslo University Hospital

Karl Øyri, PhD  
Section Manager  
Section for Method Development and Industry Collaboration

# The Intervention Center

## Mandate:

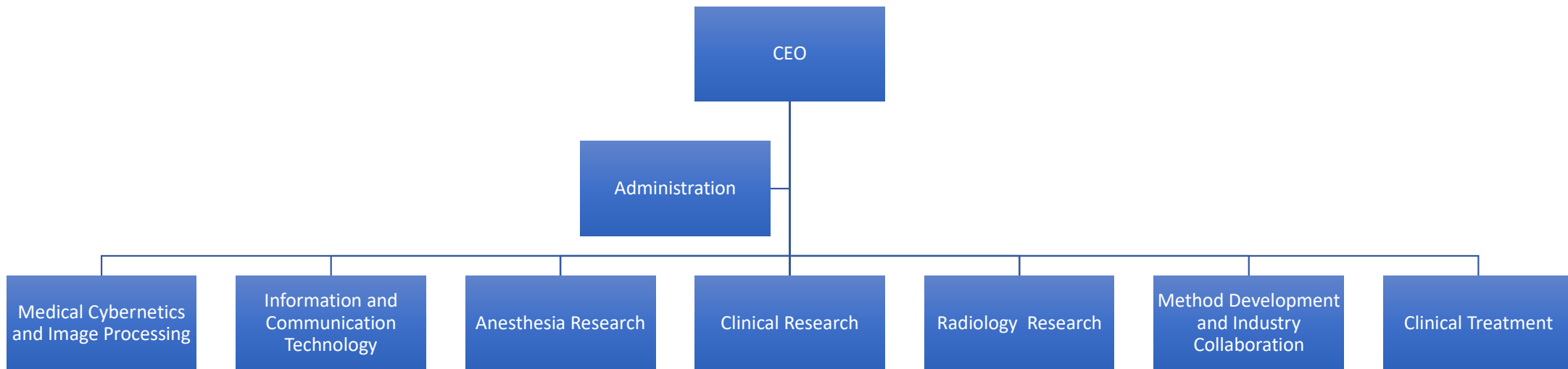
- Established in 1996 to introduce advanced technologies in medicine
  - Safe introduction of new technologies for the benefit of patients
- Department for Clinical Research and Development
- Image guided and minimally invasive therapies
- Support industry Collaboration:
- Non-production based funding



1. Cross Disciplinary Staff
2. Hybrid/ Multi Modal OR's
3. Backup to Gold Standard



# Organization



# Separation of R&D and production



# Research Groups

1. Medical Robotics, visualization and navigation
2. Research Group for Industry Sponsored Studies
3. BigMed
4. Wireless Biomedical Sensor Network Research Group
5. Value-based and International Health Care Research
6. Clinical and experimental cardiovascular monitoring
7. MR guided High Intensity Focused Ultrasound treatment
8. Image guided general surgery and intervention



# Infrastructure assets

Multi modal OR's:

- 2 Hybrid Angio OR's
- 1 CT on rails
- OR + Intraoperative CT
- Hybrid Videoscopic OR
- MRI Adjacent OR
- 2 MRI's
- Preclinical OR

-OR Lab

-IoT Lab

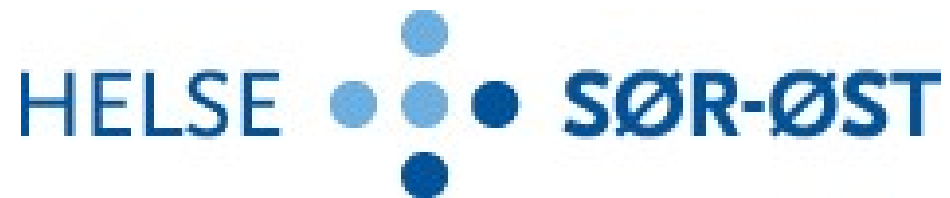
# Formal Requirements



A screenshot of a computer screen displaying two web pages. The left page is the Norwegian Medicines Act (Lov om medisinsk og helsefaglig forskning) from 2006, showing the table of contents and the first chapter, 'Formål og virkeområde'. The right page is the REC (Regional Committees for Medical Research) website, showing the 'About Applying To REC' section. The website includes a navigation menu, a search bar, and a list of links. The bottom of the screen shows a Windows taskbar with various application icons and the system clock indicating 16:07 on 17.05.2014.



# Partners



**NordicProof**

Testing solutions for  
world class healthcare



# Competitive strenghts

- Preclinical Tials
- Human Trials
- Technology Trials

## QoS

- Formalized collaboration with OUS
  - Nordic Proof
- High quality digital documentation
- Transparent public health system
  - Longitudinal patient follow up
- TestBed
  - Dedicated Infrastructure
    - Expertize: Clinical, Imaging, Technology, IT
  - “First in Man”/Early Phase Studies

